

GENERAL BOOTH BOULEVARD

~ 160' R/W ~
(M.B. 64, PG. 3A) (M.B. 278, PG. 5)

TREEFERN DRIVE

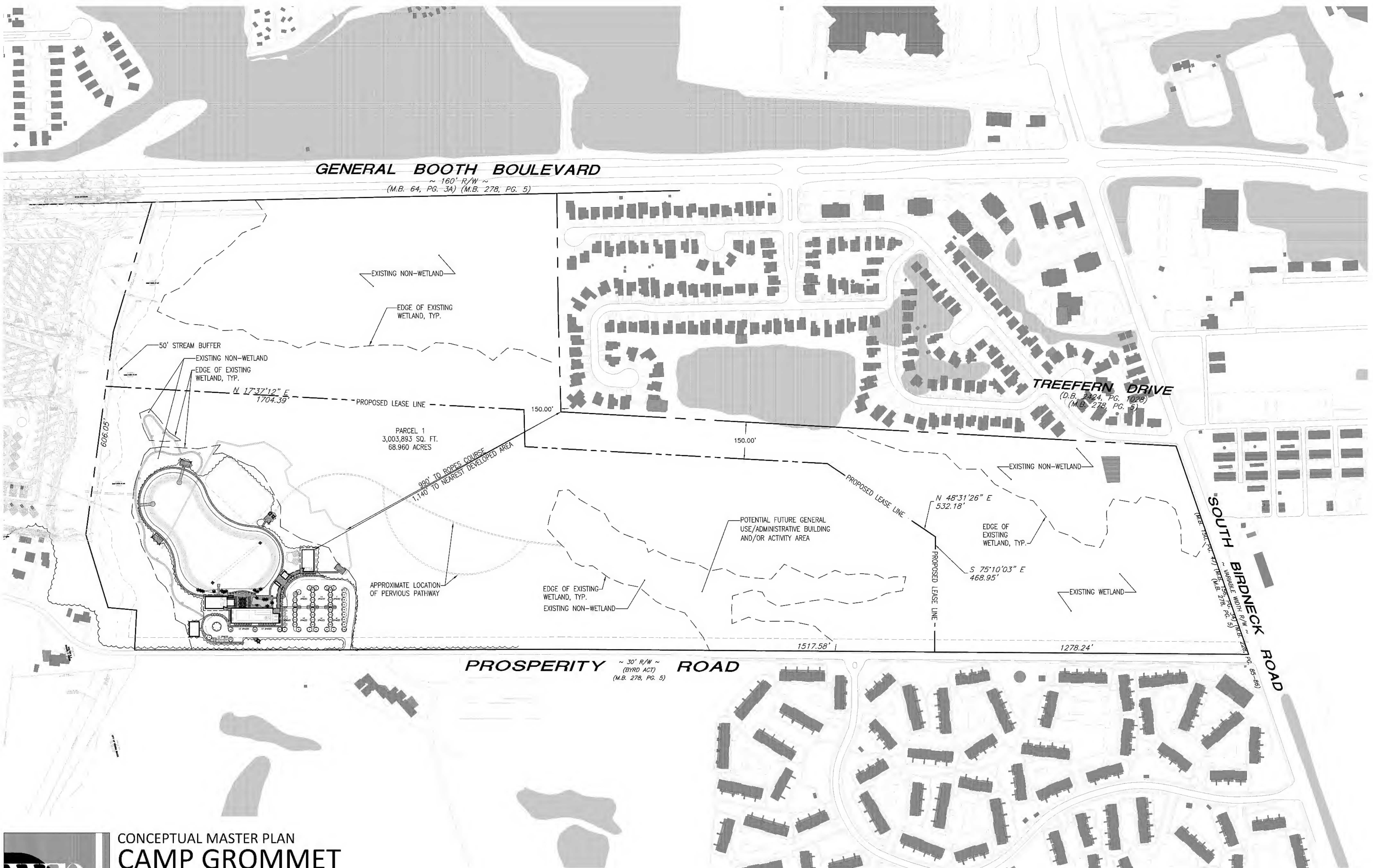
(D.B. 2324, PG. 1028)
(M.B. 278, PG. 5)

SOUTH BIRDNECK ROAD

VARIABLE WIDTH R/W
(M.B. 278, PG. 5)

PROSPERITY ROAD

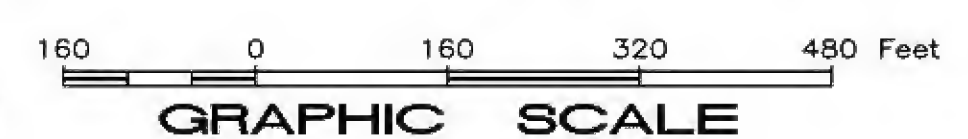
~ 30' R/W ~
(BYRD ACT)
(M.B. 278, PG. 5)

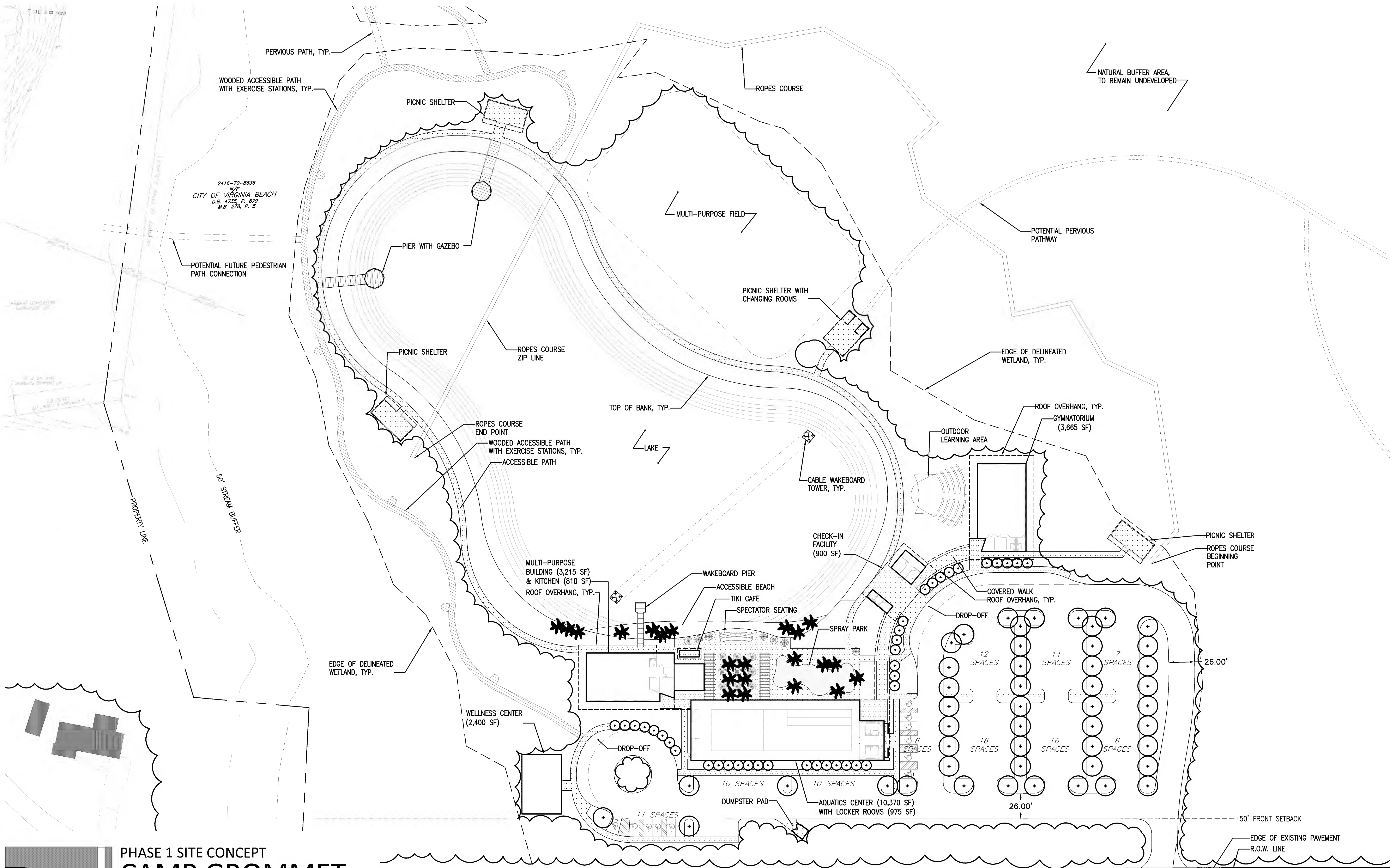


CONCEPTUAL MASTER PLAN
CAMP GROMMET

VIRGINIA BEACH, VIRGINIA
WPL | LANDSCAPE ARCHITECTS | LAND SURVEYORS | CIVIL ENGINEERS

APRIL 30, 2013



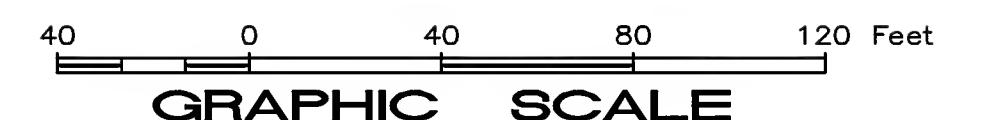


PHASE 1 SITE CONCEPT
CAMP GROMMET

VIRGINIA BEACH, VIRGINIA

WPL | LANDSCAPE ARCHITECTS | LAND SURVEYORS | CIVIL ENGINEERS

PROSPERITY ROAD
~ 30' R/W ~
 (BYRD ACT)
 (M.B. 278, Pg. 5)



APRIL 30, 2013

